

# Latest technologies for an optimal LCOE

- NX Horizon .- The industry's most advanced all-terrain solar tracker
- TrueCapture.- The proven and certified booster of Yield for Tracker

Arturo Herrero  
SVP Europe & Latam  
May 2022



# Company Overview

## Global Technology & Market Leader in PV Tracking

**65 GW** of solar tracker systems in operation / construction

**Profitable from 2016 through present**

**Independent subsidiary of Flex (Nasdaq: FLEX) since 2015**

### Global presence

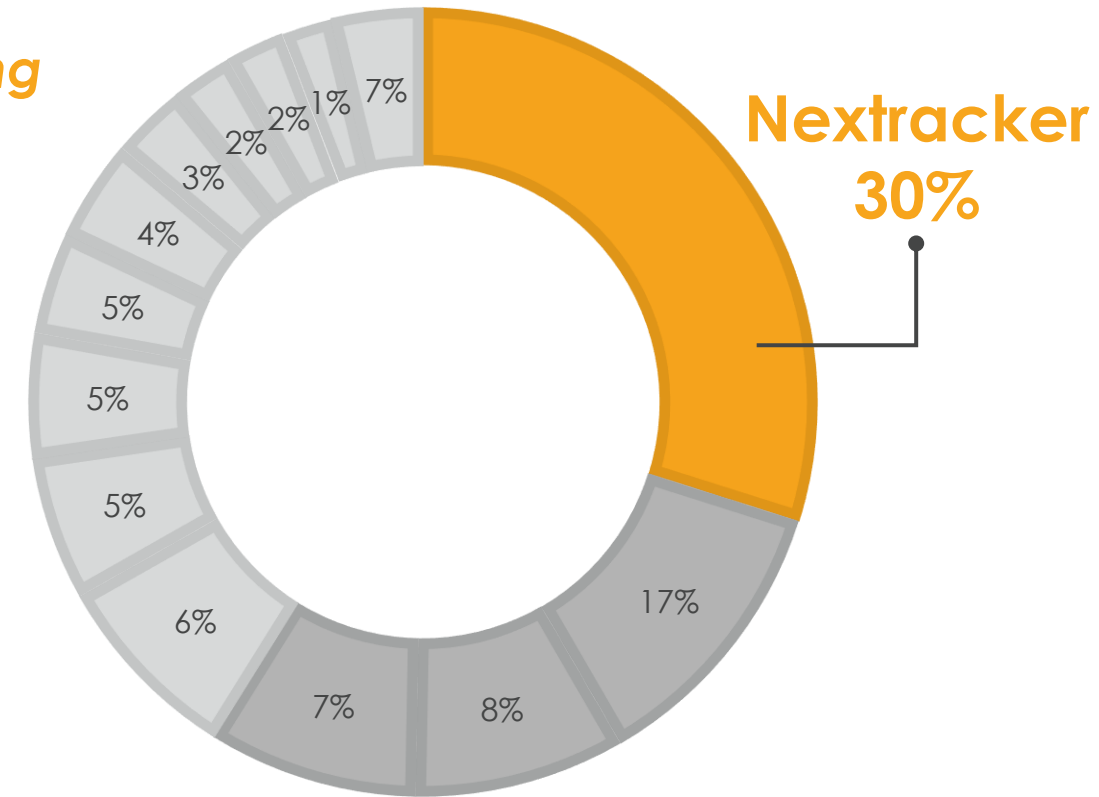
- 550 staff worldwide, 8 global offices

### Robust product lines

- Solar trackers, software and controls

### Deep PV domain

- 300+ years of collective PV executive team experience



**#1 market share leader  
6 consecutive years**

Source: IHS Markit 2021

# Nextracker Product Suite: Leading on Innovation

## SOLAR TRACKER PORTFOLIO

1P



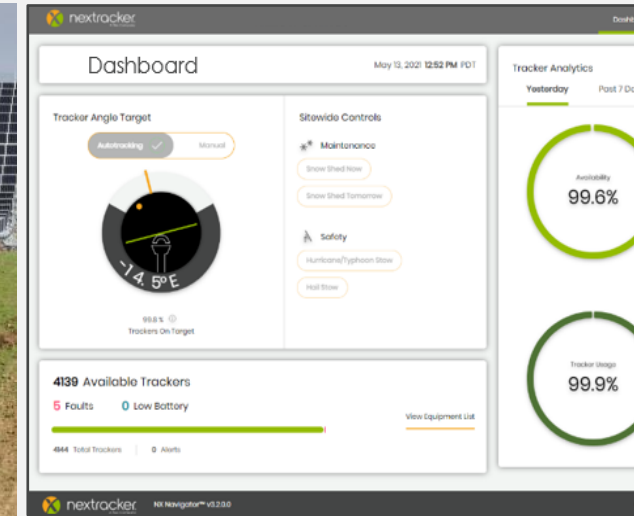
2P



### NX Horizon™ & NX Gemini™

- ✓ Industry's most advanced **smart solar trackers**
- ✓ Optimized for the complete range of **tier one modules**
- ✓ Designed for deployment on **challenging site conditions**

## SOFTWARE & CONTROLS



### TrueCapture™ & NX Navigator™

- ✓ Increase **energy yield up to 6%**
- ✓ **Smart monitoring** and control technology
- ✓ Ensure safe operations in **extreme weather**

# Nextracker Pioneering Features to Reduce LCOE



Independent, Balanced,  
Self-Powered Rows



TrueCapture™



Bifacial Optimization



NX Navigator™



Severe Weather Resiliency



Terrain Following

## GOALS:

Higher Yield & Availab.

Lower Operating Cost

Lower Installation Cost



# Proven Energy Yield Enhancing Software: TrueCapture™

Market-leading control technology boosts energy yield; Deployed on 188 Projects and 22 GW

## Fast Facts:

- Up to **6% energy boost** from **row-to-row** and **diffuse** optimization
- New **Split Boost** mode for **half-cut cells PV modules**
- Validated by the following Independent Engineers:



Shown above is TrueCapture block "on", below TrueCapture "off". Notice R2R shading on "off" block.



# NX Horizon XTR:

- 3 GW in operation;
- 5 GW contracted





# Site Preparation Requires Massive Amounts of Earthwork

While site specific, civil budget can range from 5-10 % of the EPC contract



Earthwork underway at the Mohammed Bin Rashid Solar Park. This **1GW project is part of the total 5GW** planned solar farm in Dubai, UAE.



Built in 2016, MS 74 in Mississippi required a considerable amount of labor and grading effort. Located in the **rolling hills of the southeast U.S.**, this site also experiences **erosion and flooding due to land disruption from grading**, causing negative environmental impact.

# Market Drivers for Terrain Following Tracker

## Challenges

### Civil Land Restrictions

U.S and international jurisdictions have **strict environmental regulations** limiting earthwork for solar projects



### Regions Where Labor & Earthwork Costs are High

Europe/ Australia / California



### Less Availability of Ideal sites across All Geographies

- Europe, Australia, LATAM, MENA
- USA: Southwest, southeast, east coast present hilly terrain



## NX Solutions

### Minimize Earthworks

Less hassle with regulatory restrictions to win more projects

### Decrease Installation Time

Less cut & fill reduces labor costs

### Expand Out to New Territories

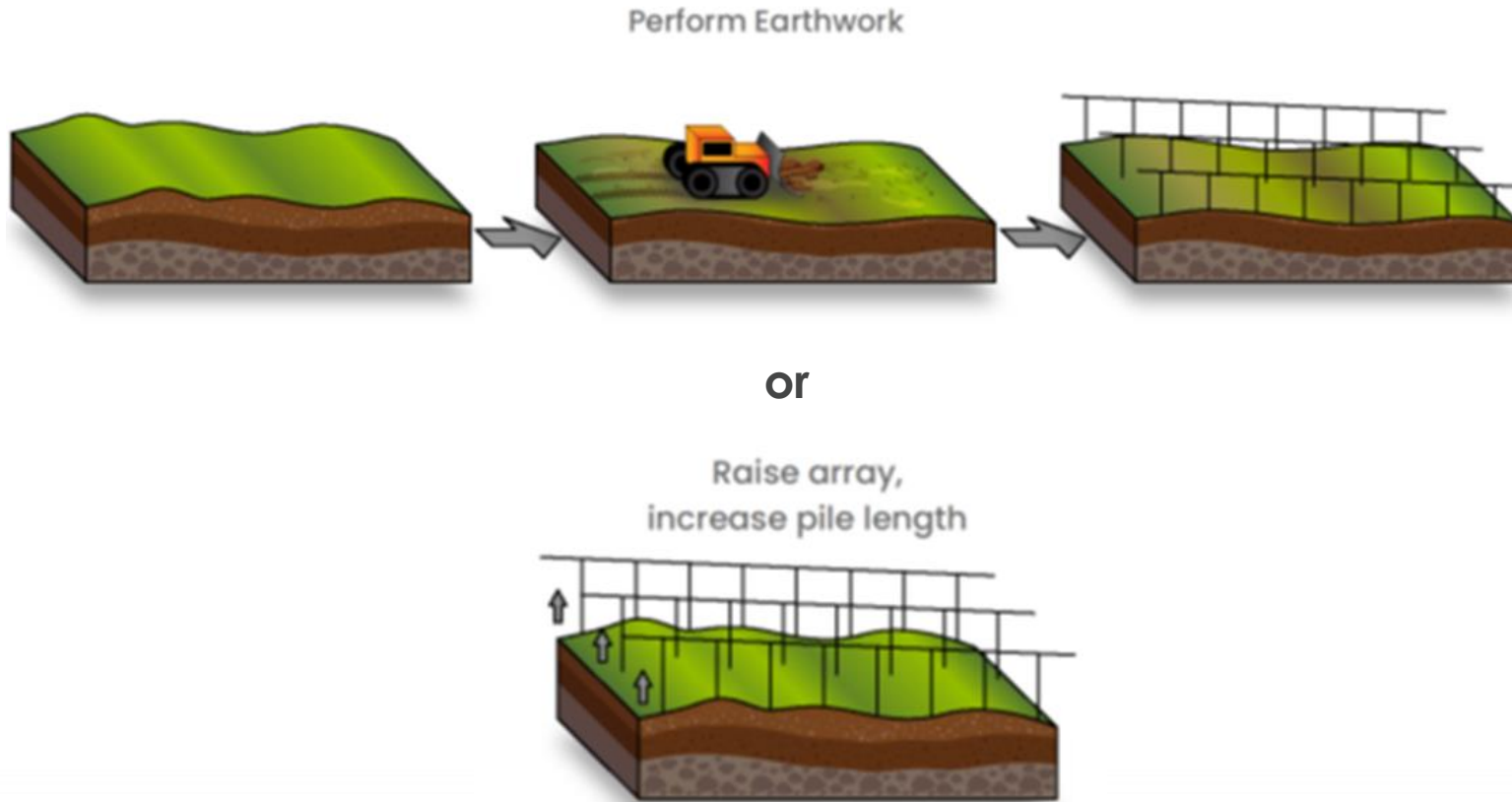
Make challenging sites more economically viable



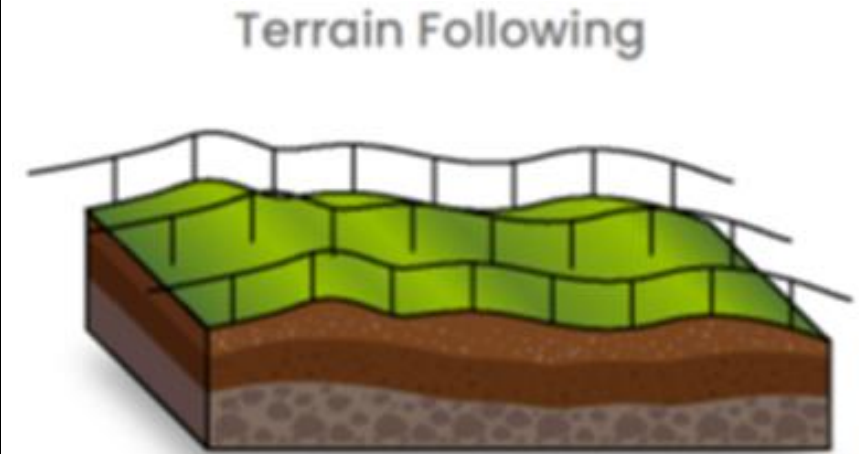


# Not Business as Usual with NX Horizon-XTR

## With Conventional Solar Trackers



## With NX Horizon-XTR







UP TO  
**90**cm **LESS STEEL**  
PER FOUNDATION

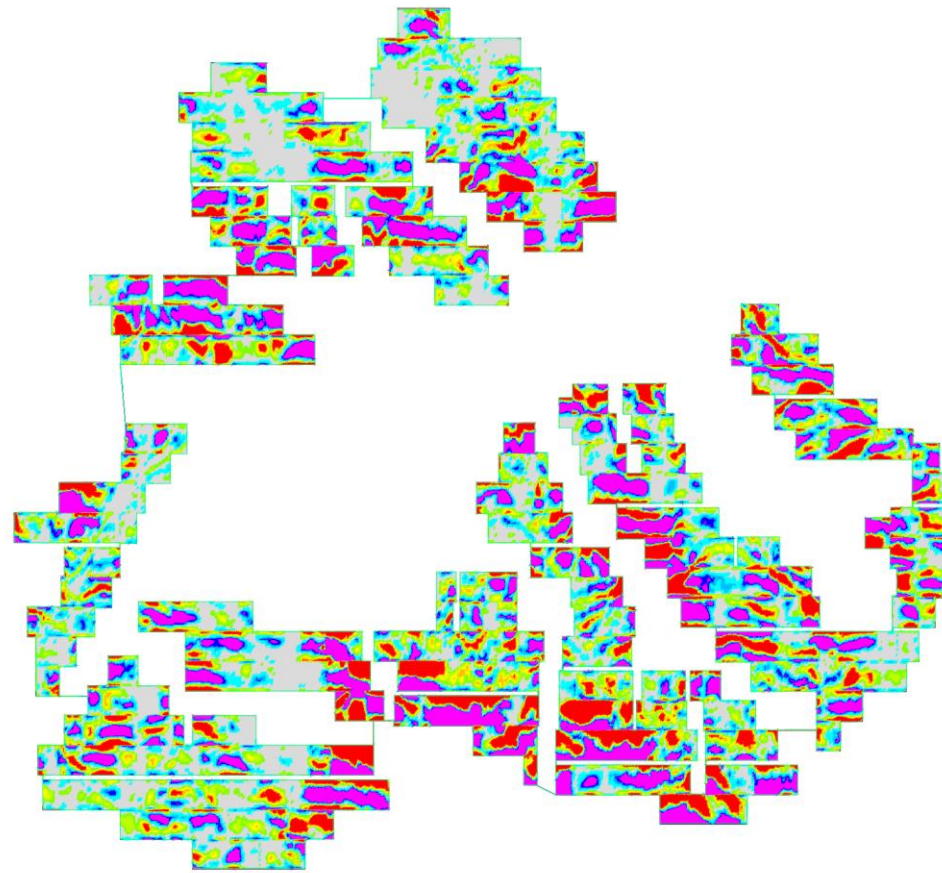
UP TO  
**90%** **LESS TRACKER**  
RELATED GRADING

**MINIMIZE**  
SOIL DISTURBANCE

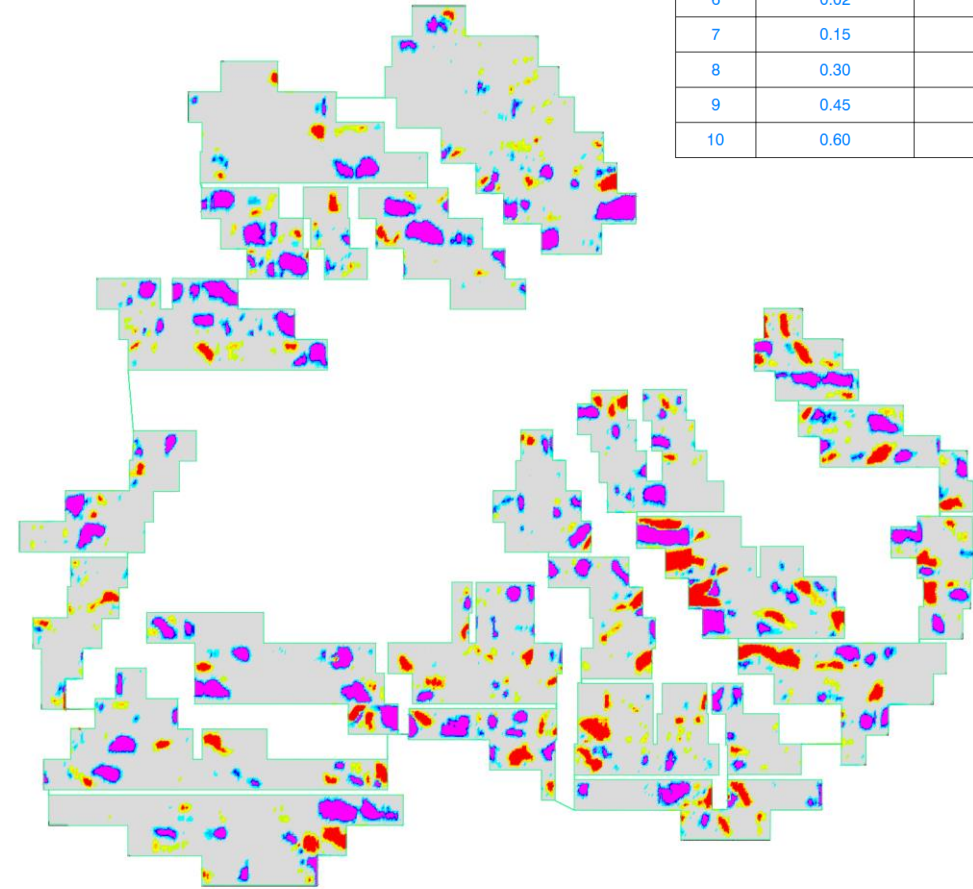


# Case Study: Grading Heat Map

250 MW site in Portugal, 65% reduction in grading volume (950k m<sup>3</sup>)



Standard NX Horizon



NX Horizon-XTR

Elevations Table				
Number	Minimum Elevation	Maximum Elevation	Area	Color
1	-8.31	-0.45	544402.24	Red
2	-0.45	-0.30	139093.93	Orange
3	-0.30	-0.18	158631.70	Yellow
4	-0.15	-0.01	397535.52	Light Green
5	-0.02	0.02	912169.65	Green
6	0.02	0.15	348790.40	Light Blue
7	0.15	0.30	195837.75	Blue
8	0.30	0.45	128477.44	Dark Blue
9	0.45	0.60	91604.18	Purple
10	0.60	8.31	344357.91	Dark Purple



# Wright Solar Park

240 MW

**Developer:** Clenera

**Commissioned:** December 2019

**Savings:** \$2.3M (0.095 \$/W)







nexttracker™

Thank you